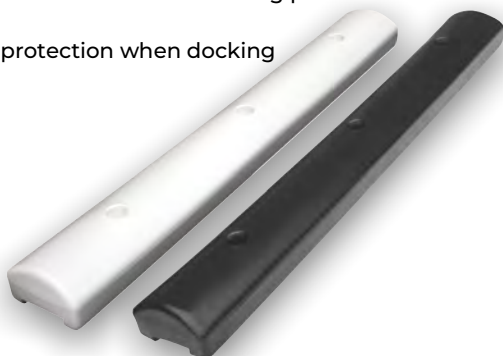


MARINE ACCESSORIES

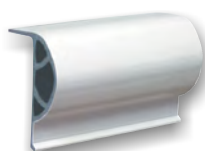
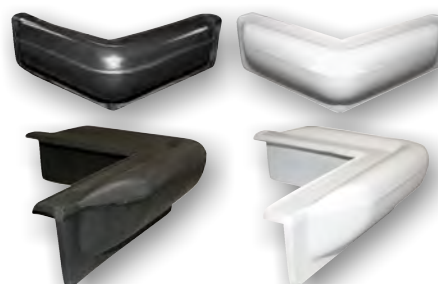
VERTICAL BUMPERS

- Optional flat back or recessed to fit aluminum or metal dock posts
- Durable, long lasting thick plastic with UV inhibitor
- Easy to mount with recessed mounting points
- Provide boat protection when docking
- Length - 3 ft

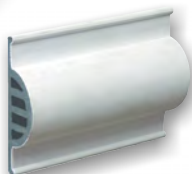


CORNER BUMPERS

- First line of defense against expensive damage to boats
- Durable yet flexible material
- Easily installed on most dock surfaces that have 90 degree corners
- Can withstand harsh dockside conditions for many years



TOP RAIL



RUB RAIL

- Unsurpassed impact resistance due to reinforced internal structure
- Sleek styling will be an asset to the appearance of any commercial or private dock
- Available in Black or White
- Made from a specially formulated PVC compound, providing maximum protection against weather, fungus and UV rays
- Durable for years of service
- Widths: Top Rail - 3", Rub Rail - 3 3/4"
- 50 ft per case (five 10 ft sections)

MARKER BUOYS

Cellofoam's Marker Buoys are perfect for No Wake Zones and other water markers. They are foam-filled and counter weighted which enables the buoy to remain vertical and visible under demanding marine conditions.



- One piece seamless shell constructed of heavy-duty, UV protected polyethylene
- Eye bolt in base for anchoring ease
- Large diameter of concrete ballast for increased stability
- Long-lasting decals are molded into recessed areas to minimize scuffing from passing traffic
- Night and day visibility
- Height - 72", Diameter - 16", Shipping Wt. - 60 lb



(800) 531-4734
www.cellofoam.com

CONYERS, GA
1961 Rockdale Industrial Blvd. 30012

SALLISAW, OK
400 E. Houser Ave. 74955



GALVANIZED STRUCTURAL STEEL DOCK HARDWARE

Our Dock Hardware is designed for use with 1-½" thick lumber (minimum width 6"). All hardware is mounted with ½" carriage bolts. All male and female dock to dock connections are made with either ¾" bolts with lock nuts or ¾" connecting pins.



Outside Corner (Female) - has two ½" welded tabs. Use with a male out-side corner. Each leg is 10"L x 5"H.
RHH-OCF WT 9.0lb



Female T Connector - has two welded ½" tabs. Bolts to side of dock to attach fingers and ramps. 5"L x 5"H.
RHH-SF WT 3.5lb



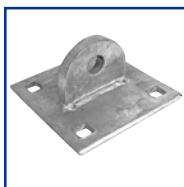
Splice Plate - used to securely add a finger to your dock or to strengthen a section of the dock beyond the length of the lumber. 25"L x 5"H WT 8.15lb



Dock Cleats - designed to bolt onto the decking surface so that boats and personal water crafts can be tied to the dock.
RHC8 8"L WT 1.0lb
RHC10 10"L WT 2.0lb



Outside Corner (male) - has one ½" welded tab. Use with a female outside corner to connect docks end to end. Joint requires ¾" bolt set or connector pin (L). Each leg is 10"L x 5"H.
RHH-OCM WT 8.5lb



Male T Connector - has one welded ½" tab. Use with female T connector to attach fingers and ramps. 5"L x 5"H. ¾" bolt set required for joint.
RHH-SM WT 3.25lb

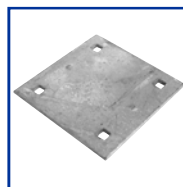
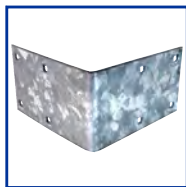


Plate Backing - designed for use with the single "T" to keep bolts from pulling through the wood. 4 slots for ¾" hex head bolts ensure a secure hold; perfectly fits 1-½" thick lumber. 5"L x 5"H.
RHHB WT 1.0lb



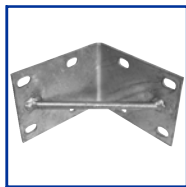
Outside Corner End - use this corner at ends of fingers and docks. Ideal for swim floats and ski jump corners. Each leg is 10"L x 5"H.
RHH-OCE WT 7.0lb



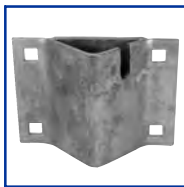
Washer Plate - use two washer plates with each angle. Measures 1-½"L x 5"H.
RHHW WT 0.5lb



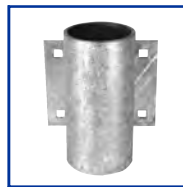
Cleat Angle - designed to accommodate various cleats and to help prevent the cleats from pulling out. Lightweight metal body ensures reliable use. 2 ¾"L x 2 ¾"H
RHHL-CA WT 1.5lb



Inside Corner - this heavy-duty inside corner should be used with one of the outside corners. Each leg has elongated holes for easy fit-up and is 8-¾"L x 6"H.
RHH-IC WT 6.5lb



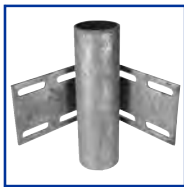
Chain Retainer - bolts to side of dock. Use weights an chains to hold dock in place. Accommodates ¼", ⅜", & ½" chain. 5"L x 5"H
RHCH WT 3.75lb



Pipe Holder/Outside 3" - bolt to out-side of dock. Carriage bolt set required for attaching. Use 2" pipe to hold dock in place.
RHP-3 WT 8.25lb



Angle - use this heavy-duty angle for all cross supports. Each leg is 2-½"L x 5"H.
RHH-A WT 1.75lb



Inside Corner/Pipe Holder 3" these heavy-duty inside corners should be used with one of the outside corners and has an internal pipe holder to be used with 2" pipe. Welded gusset gives strength to the dock's frame. 8-¾"L x 5"H. Requires carriage bolt set for attaching.
RHH-OIC3 WT 11.5



Connector Pin Set - for quick disconnect. Used to connect male and female connectors. Galvanized ¾" connector pin and hitch clip pin.
RHBPIN WT 0.5lb

**Dock Hardware fits with
any size Permafloat**



(800) 531-4734
www.cellofoam.com

